



LEVELNIC DL-S3

High accuracy Level with Simple & Clear Operation
Worlds first Digital Level with built-in Microcomputer

■ Digital Display
0.001mm/m



■ MATERIALS • Body : Aluminum
• Base : Cast Iron

■ FEATURES • Easy to Fix the Datum point, Divide measurement value into halves with one-touch operation (With "0" cal. switch, 1/2 cal. switch)
• Measurement value can be output with RS232 signal
• Connectible to PC or Printer with RS232 interface
• Custom-made base can be attached to the threaded screw holes in the bottom base

SPECIFICATIONS

Measuring Range	$\pm 5.00\text{mm/m} \cdot \pm 0.286^\circ$	
Minimum Reading	$\pm 0.001\text{mm/m} \cdot \pm 0.0001^\circ$ ($0 \sim \pm 2\text{mm/m} \cdot 0 \sim \pm 0.115^\circ$) $\pm 0.01\text{mm/m} \cdot \pm 0.001^\circ$	
Operating Temperature	$0 \sim 40^\circ\text{C}$	
Accuracy	$17 \sim 23^\circ\text{C}$	$\pm 0.85\%\text{rdg}$ ($0 \sim \pm 2\text{mm/m} \cdot 0 \sim \pm 0.115^\circ$) $\pm 1.0\%\text{rdg}$ ($\pm 2 \sim \pm 5\text{mm/m} \cdot \pm 0.115^\circ \sim \pm 0.286^\circ$)
	$0 \sim 40^\circ\text{C}$	$\pm 2.6\%\text{rdg}$ ($0 \sim \pm 2\text{mm/m} \cdot 0 \sim \pm 0.115^\circ$) $\pm 2.7\%\text{rdg}$ ($\pm 2 \sim \pm 5\text{mm/m} \cdot \pm 0.115^\circ \sim \pm 0.286^\circ$)
Repeatability	Within $\pm 0.005\text{mm/m} \cdot \pm 0.0003^\circ$	
Output Signal	Conforms to RS-232C	
Dimensions	L172 × W65 × H129mm (Base Dimension : L150 × W55mm)	

※ 1 : For DEG (°) Display mode, "0 (Zero)" before the decimal point is not displayed.

For 0.001mm/m (0.0001°) display mode, maximum reading which can be displayed is less than $\pm 1.999\text{mm/m}$ ($\pm 0.1145^\circ$)

※ 2 : % rdg indicates the percentage of displayed value

Model No.	DL-S3	DL-S3C
Charging time	—	12hours (when fully charged)
Power Source	"9V" type dry cell, 1 pc AC adapter	Ni-MH rechargeable 8.4 nominal voltage, 200mAh
Run time (continuous use) ※3	Zinc-carbon Cell : approx. 10 hrs. Alkaline Cell : approx. 20 hrs.	12hour charge... approx. 9hrs 8hour charge... approx. 6hrs 4hour charge... approx. 2hrs

※ 3 : May vary depending upon measurement conditions

Order No.	Model No.	Weight
010013	DL-S3	2.2kg
010030	DL-S3C	2.2kg

■ With V Groove (available on request)

Model	DL - S3V
Tolerance	Within 0.1mm/m (On condition that the bubble in the sub-bubble tube is within the base line)
Tolerance between Flat and V Groove	Within 0.05mm/m
Angle of V Groove	130° (for cylindrical objects up to $\phi 65\text{mm}$)

LEVELNIC DL-S3 with magnetic L-type base.

Magnetic base enables Z-axis measurement in addition to X-axis and Y-axis.



USE

- High precision leveling of machine tools and surface plates, Straightness, flatness, and vertical measurement

MATERIALS

- DL-S3 / Body: Aluminum, Base: Cast Iron
- L-type base : Cast Iron

FEATURES

- Quick display of the measured value
- Measurement value can be output with RS-232 signal.
- L-type magnetic base enables vertical(Z-axis) measurement
- With 130° V groove

Order No.	Model No.	Base Squareness (mm)	Weight
010027	DL-S3L	within ± 0.04	5.5kg

※ Refer to DL-S3 for detailed specifications for this unit.

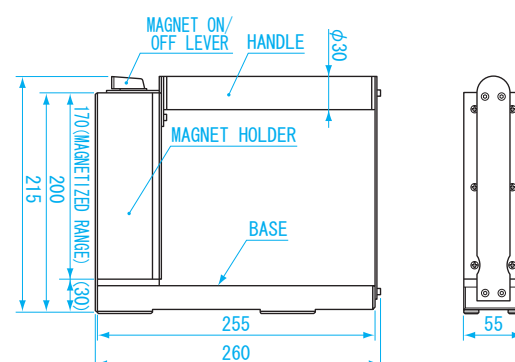
L-TYPE BASE

LEVELNIC DL-S3 or DL-S2W, equipped with L-type base enables measurement in the Z-axis in addition to X-axis and Y-axis



DIMENSIONS

Units : mm



MATERIALS

- Cast Iron

FEATURES

- Applicable Levelnic: DL-S3 • DL-S2W
- Vertical(Z-axis) measurement is available by mounting on Levelnic
- With 130° V groove

Order No.	Model No.	Base Squareness (mm)	Weight
010028	DL-SL	within ± 0.04	4.9kg

ANGLE

LEVELNIC

PRECISION
LEVEL

ANGLE
LEVEL

LEVEL

PROTRA
CTOR

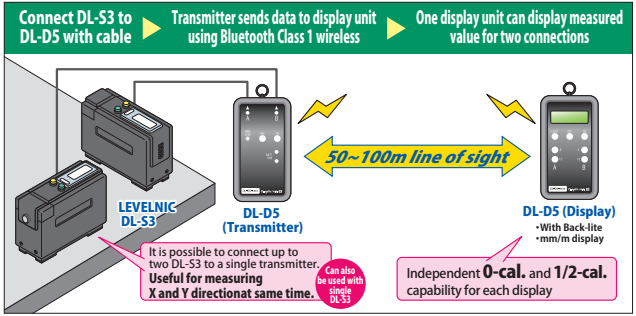


ANGLE

07

TRANSMITTER / DISPLAY SET

Connects to two DL-S3 at the same time
Receiver can display measurements from X and Y directions



- USE** • Transmit and display measurements for up to two Levelnic DL-S3
- FEATURES**
- Simultaneous display of two connected DL-S3. Useful for measuring X and Y directions.
 - Eases installation of large machine tools by allowing multiple operators to work at same time
 - Measured data is more easily visible, especially when used in locations which are remote or have low clearance height.
 - Since transmitter and receiver are a paired set, there is no need to set up after purchase – it can be used immediately.

Order No.	Model No.	Compatible Model	Weight
010043	DL-D5	DL-S3 · DL-S3C	290g each ※

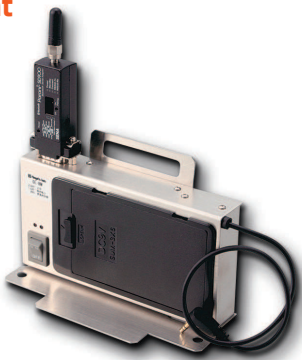
※ Including silicone battery cover

SPECIFICATIONS

	Transmitter	Display
Input	Levelnic DL-S3 external signal (x2)	—
Display	—	16char × 2lines, character size = 4.9 × 2.5mm, with backlight
Wireless	Bluetooth Class1	
Communication range	50 ~ 100m line-of-sight (depending on conditions)	
operating temperature	0 ~ 40℃	
Power	2x AA cells (can also use commercially available rechargeable batteries)	
operating life (continuous use)	communicating with display device : approx. 17 hours attempting communication with display : approx: 3 hours	Alkaline cells : approx. 8 hours
DIMENSIONS	144 × W76 × D27mm (Including lanyard ring) (when mounted in silicone cover : L147 × W81 × D35mm)	
Accessories	2x connecting cable (approx. 80cm length) 2x AA cells, Silicone cover.	2x AA cells, Silicone cover

LEVELNIC WIRELESS ADAPTER DL-BW

Allows communicating with Levelnic using Bluetooth
Wireless range of 50-100mm line-of-sight



Shown mounted on DL-S3C

- USE** • Wireless adapter for Levelnic
- MATERIALS** • Body: Stainless
- FEATURES**
- The RS232C output signal is transmitted using Bluetooth wireless
 - Eliminating cables greatly improves work efficiency

SPECIFICATIONS

Order No.	Model No.	Weight
010038	DL-BW	530g

Input	Levelnic RS-232C signals (Levelnic use only)
Wireless System	Bluetooth Class1
Power Source	AAA battery 6 pcs (rechargeable batteries can be used)
Run time (continuous use)	Alkaline cell : Approx. 70 hrs/ Zinc-carbon cell : Approx. 30 hrs 1700mAh rechargeable battery: Approx. 45 hrs ※ May vary depending upon measurement conditions
Dimensions	L143 × W50 × H173mm (Including trasmission unit)
Applicable Levelnic	DL-S3, DL-S3C, DL-m3, DL-m3LS, DL-D3, DL-S3L ※ DL-S3, DL-S3C can direct mount

※ A small thermal printer can not be used

ANGLE

LEVELNIC

PRECISION LEVEL

ANGLE LEVEL

LEVEL

PROTRACTOR



■ High accuracy Digital Level
(Wireless by Bluetooth)
Resolution 0.001mm/m

Wireless Data transmission.
The maximum longitudinal coverage is
50~100m.



- MATERIALS
- Body: Aluminum
 - Base: Cast iron
- FEATURES
- Wireless type Levelnic, useful for leveling and tilt measurement;
 - In overhead location
 - In places where the cable can not reach
 - PC screen becomes Display of Levelnic
 - Measurement data can be displayed on PC, using receiver and Data display software
 - Wireless data transmission
 - Custom-made base can be attached to the threaded screw holes (M5 × P0.8) in the bottom of Level base (Flat base)

■ SPECIFICATIONS

Measuring Range	$\pm 5.000\text{mm/m} \cdot \pm 0.2865^\circ$
Minimum Reading	$0.001\text{mm/m} \cdot 0.0001^\circ$
Operating Temperature	$0 \sim 40^\circ\text{C}$
Accuracy	$17 \sim 23^\circ\text{C} \quad \pm 0.85\% \text{ rdg} (0 \sim \pm 2\text{mm/m}, 0 \sim \pm 0.1146^\circ)$ $\pm 1.0\% \text{ rdg} (\pm 2 \sim \pm 5\text{mm/m}, \pm 0.1146 \sim \pm 0.2865^\circ)$ $0 \sim 40^\circ\text{C} \quad \pm 2.6\% \text{ rdg} (0 \sim \pm 2\text{mm/m}, 0 \sim \pm 0.1146^\circ)$ $\pm 2.7\% \text{ rdg} (\pm 2 \sim \pm 5\text{mm/m}, \pm 0.1146 \sim \pm 0.2865^\circ)$
Repeatability	within $\pm 0.005\text{mm/m} \cdot \pm 0.0003^\circ$
Radio System	Bluetooth Class1
Power Source	"9V" type dry cell (1pc) AC Adapter (AC 100V) included
Run time (Continuous use)	Alkaline dry cell: Approx. 10 hrs ※ May vary depending upon measurement conditions
Dimensions	L173 × W59 × H147mm (H : up to top of Antenna) (Base Dimensions : L150 × W55mm)

※ % rdg indicates percentage of displayed value

Order No.	Model No.	Weight
010017	DL-S2W	2.1kg

ANGLE

LEVELNIC

PRECISION
LEVEL

ANGLE
LEVEL

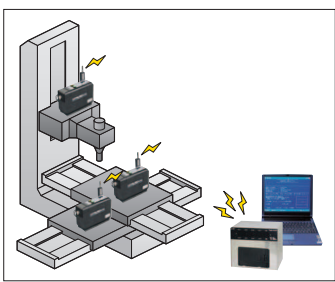
LEVEL

PROTRA
CTOR



LEVELNIC DATA SYSTEM

Enables data display and saving of up to 8 levelnic with one PC



Example using multiple units with Bluetooth wireless communication

- USE** • For data management of multiple Levelnics
- MATERIALS** • Body: Stainless steel
- FEATURES** • 8 Levelnics can be connected at once
 - Data display software included
- SPECIFICATIONS**

Order No.	Model No.	Weight
010037	DL-ADP	1.6kg

Input	D-SUB (9 pins, male) RS-232C compliant, 8 inputs (For Levelnic connection only) 1200 Baud, 1 stop bit, No parity, No handshaking
Output	D-SUB (9 pins, male) RS-232C compliant, 1 output (PC connection) 9600 Baud, 1 stop bit, No parity No Hardware handshaking
Operating Temperature	0 ~ 40°C
Power Source	AC100V Adapter [DC9V Output] (Included) AAA batteries (1.5V) 6 pc ※ Run time depends on number of Levelnics
Dimensions	W180 × H150 × D130mm
Applicable Levelnic	DL-S3, DL-S3C, DL-S3L, DL-m3, DL-m3LS, DL-S2W ※ DL-P5AD, DL-P6 can also use cable connection ※ DL-S2W, DL-BW can connect using built-in wireless capability

LEVELNIC DISPLAY

Can display data at a distance of 50-100m (line-of-sight). Enables measurement process to be done by one person. The work of two can be done by one person.



Combination example with DL-S2W

- USE** • Levelnic measurement data display
- MATERIALS** • Body: Stainless steel
- FEATURES** • Can divide measurement value into half with one-touch operation (DL-S2W only)
- SPECIFICATIONS**

Order No.	Model No.	Weight
010024	DL-D4	330g

Display Range	As per Levelnic spec.
Minimum Reading	As per Levelnic spec.
Operating Temperature	0 ~ 40°C
Input Signal	Conforms to RS-232C (Levelnic digital output signal only)
Power Source	" 9V " type dry cell / AC adapter (included)
Run time (Continuous use)	with wireless connection : Alkaline cell : Approx. 5 hrs with cable connection : Alkaline cell : Approx. 60 hrs ※ May vary depending upon measurement conditions
Dimensions	L116 × W62 × H48mm
Applicable Levelnic	DL-S3, DL-S3C, DL-S3L, DL-m3, DL-m3LS, DL-S2W ※ DL-P5AD, DL-P6 can also use cable connection ※ Can connect to Wireless such as DL-S2W, DL-BW

LEVELNIC DL-m1



ANGLE

Digital display with 0.01mm/m resolution. Unlike bubble level, there is no delay waiting for reading to settle, reducing human error.

■ High accuracy Level Digital Display 0.01mm/m



- **USE**
 - High precision leveling of machine tools and surface plates.
 - Straightness and flatness measurement.
- **MATERIALS**
 - Body: Aluminum
 - Base: Cast iron
- **FEATURES**
 - Compact, Lightweight and simple operation
 - Easy to fix the Datum point, divide measurement value into half with one touch operation
 - Fast output reduces installation time for field work

■ SPECIFICATIONS

Order No.	Model No.	Weight
010014	DL-m1	880g

Measuring Range	± 5.00mm/m
Minimum Reading	0.01mm/m
Operating Temperature	0 ~ 40°C
Accuracy ※	17~23°C ±0.02mm/m or ±3% rdg whichever is larger (0~±2mm/m) ±4% rdg (±2~±5mm/m) 0~40°C ±0.02mm/m or ±5% rdg whichever is larger (0~±2mm/m) ±6% rdg (±2~±5mm/m)
Repeatability	within ± 0.01mm/m
Power Source	9V type dry cell, 1 pc
Run time (continuous use)	Zinc-carbon cell Approx. 45 hrs, Alkaline cell Approx. 90 hrs. ※ May vary depending upon the measurement conditions
Dimensions	L105 × W50 × H73mm (Base Dimensions : L100 × W50mm)

※ % rdg indicates the percentage of displayed value

07

LEVELNIC DL-m3



■ High accuracy digital level 0.01mm/m, with RS-232C



- **USE**
 - High precision leveling of machine tools and surface plates.
 - Straightness and flatness measurement.
- **MATERIALS**
 - Body: Aluminum
 - Base: Cast iron
- **FEATURES**
 - Equipped with RS-232C output and Softwares for Data Saving, and calculating Flatness, Straightness
 - Easy to fix the Datum point, divide measurement value into half with one touch operation
 - Digital display for easy to read measurement
 - Compact, Light weight and Simple operation

■ SPECIFICATIONS

Order No.	Model No.	Weight
010015	DL-m3	880g

Measuring Range	± 5.00mm/m
Minimum Reading	0.01mm/m
Operating Temperature	0 ~ 40°C
Accuracy ※	17~23°C ±0.02mm/m or ±3% rdg whichever is larger (0~±2mm/m) ±4% rdg (±2~±5mm/m) 0~40°C ±0.02mm/m or ±5% rdg whichever is larger (0~±2mm/m) ±6% rdg (±2~±5mm/m)
Repeatability	within ± 0.01mm/m
Output Signal	Conforms to RS-232C
Power Source	" 9V" type dry cell, 1 pc
Run time (continuous use)	Zinc-carbon cell Approx. 35 hrs, Alkaline cell Approx. 70 hrs. ※ May vary depending upon measurement conditions
Dimensions	L105 × W50 × H73mm (Base Dimensions : L100 × W50mm)

※ % rdg indicates percentage of displayed value

ANGLE

LEVELNIC

PRECISION
LEVEL

ANGLE
LEVEL

LEVEL

PROTRA
CTOR



LEVELNIC DL-m3LS

Levelnic DL-m3 on L-type Base
X axis·Y axis and in addition, Z-axis measurements are possible



- USE** • High precision leveling of machine tools and surface plates. Straightness, flatness and vertical measurement.
- MATERIALS** • DL-m3 Body: Aluminum, Base: Cast iron
• L type base: Cast iron
- FEATURES** • Digital Display
• Small and lightweight
• Equipped with RS-232C output and software for data saving, and calculating flatness, straightness
• L type base allows measurements in the vertical direction
• with 130° V groove

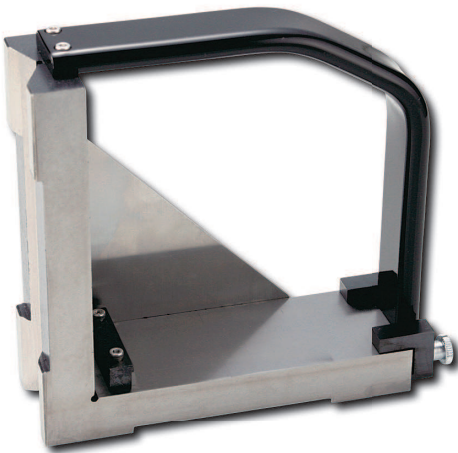
※ Base does not have magnetic capability

Order No.	Model No.	Base Squareness (mm)	Weight
010019	DL-m3LS	within ± 0.035	2.8kg

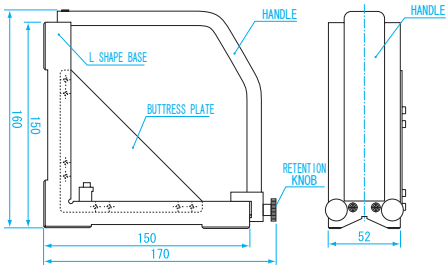
※ DL-m3LS conforms to DL-S3 specifications

L-TYPE BASE FOR LEVELNIC DL-mL

Levelnic DL-m1, m3 mounted on base will be able to take vertical measurements



DIMENSIONS Units : mm



※ Base does not have magnetic capability

- MATERIALS** • Cast iron
- FEATURES** • Applicable Levelnic : DL-m1 • DL-m3
• Levelnic DL-m1, m3 mounted on base will be able to take vertical measurements
• with 130° V groove

Order No.	Model No.	Base Squareness (mm)	Weight
010022	DL-mL	within ± 0.035	1.9kg



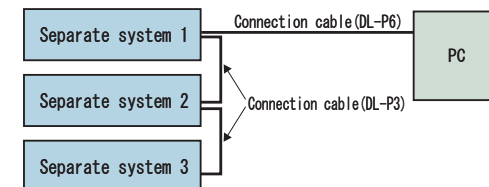
■ High accuracy digital Level with output to external display 0.001mm/m



- Digital sensor (DL-S2) • Digital display (DL-D3) • Cable (DL-P1) as combined system.

※ PC is not included

■ Example of connecting multiple systems



■ USE

- High precision leveling of machine tools and surface plates. Straightness and flatness measurement for digital display

■ MATERIALS

- Body: Aluminum • Sensor base : Cast iron

■ FEATURES

- Display allows machine tool data obtained by Levelnic to be close at hand.
- When leveling large equipment or in high places, the separate display allows the operator to easily see the data.
- Output data is available on built in RS-232C interface for connection to computer or printer
- Multiple output signals can be combined onto one signal allowing expansion to 2, 3, or 4 devices for easy processing
- Easy to fix the Datum point, divide measurement value into half with one touch operation
- Custom-made base can be attached to the threaded screw holes (M5 × P0.8) in the bottom of digital sensor base

■ SPECIFICATIONS

Measuring Range	± 5.000mm/m • ± 0.2865°
Minimum Reading	0.001mm/m • 0.0001° 0.01mm/m • 0.001°
Operating Temperature	0 ~ 40°C
Accuracy	17 ~ 23°C ± 0.85% rdg (0 ~ ± 2mm/m • 0 ~ ± 0.1146°) ± 1.0% rdg (± 2 ~ ± 5mm/m • ± 0.1146 ~ ± 0.2865°) 0 ~ 40°C ± 2.6% rdg (0 ~ ± 2mm/m • 0 ~ ± 0.1146°) ± 2.7% rdg (± 2 ~ ± 5mm/m • ± 0.1146 ~ ± 0.2865°)
Repeatability	within ± 0.005mm/m • ± 0.0003°
Output Signal	Conforms to RS-232C
Power Source	AAA battery 6 pc AC adapter (included)
Run time (Continuous use)	Zinc-carbon cell : Approx. 27 hrs Alkaline cell : Approx. 55 hrs ※ May vary depending upon measurement conditions
Dimensions	DL-S2 L167 × W59 × H111mm (Base Dimension : L150 × W55mm) DL-D3 L235 × W106 × H51mm DL-P1 Length : 5m (standard cable)

Order No.	Model No.	Weight
010023	DL-D3	1kg
010012	DL-S2	2kg
010031	DL-P1	400g
010033	DL-P3	100g

PC connection cable

■ USE

- For connecting Levelnic to PC, printer (DL-P6 not for printer connection)

■ FEATURES

- Length: φ 3 × 5m
- DL-P5AD : 25-pin connector, with pin adapter 25 → 9 (serial port connection)
- DL-P6 : 9 pins connector (Serial port connection)
- Applicable Levelnic : DL-m3 • DL-S3 • DL-m3L • DL-S3L • DL-S3C • Separate system

Order No.	Model No.	Material
010036	DL-P5AD	2 cond. w/ shield (Cu)
010040	DL-P6	2 cond. w/ shield (Cu)



LEVELNIC DL-S1



Digital display with 0.01mm/m resolution. Unlike bubble level, there is no delay waiting for reading to settle, reducing human error.

- Digital display with 0.01mm/m resolution



- **USE**
 - High precision leveling of machine tools and surface plates, Straightness and flatness measurement
- **MATERIALS**
 - Body : Aluminum
 - Base : Cast iron
- **FEATURES**
 - Faster response than bubble level
 - Wider range of measurement than conventional level
 - Measurement can be taken in difficult to see position by pressing hold switch and then reading
- **SPECIFICATIONS**

Measuring Range	± 9.99mm/m
Minimum Reading	0.01mm/m
Operating Temperature	0 ~ 40℃
Accuracy	17 ~ 23℃ ± 1.3% rdg 0 ~ 40℃ ± 3.0% rdg
Repeatability	within ± 0.01mm/m
Power Source	"9V" type dry cell × 1 AC adapter (Optional)
Run time (continuous use)	Zinc-carbon Cell---Approx. 25 hrs Alkaline Cell---Approx. 50 hrs ※ May vary depending upon measurement conditions
Dimensions	L159 × W78 × H104mm (Base Dimension : L150 × W55mm)

※ 1 : AC adapter sold separately
※ 2 : % rdg indicates percentage of displayed value.

Order No.	Model No.	Weight
010011	DL-S1	2.0kg

- Also available with special V-groove base

Model	DL - S1V
Rolling Error	Within 0.1mm/m
Plane and V groove error	0.05mm/m
V groove angle	130° (for cylindrical objects up to ϕ 65mm)

High-sensitive (0.01mm/m) Pendulum type level with analog output.
Three levels of sensitivity

■ Analog Display 0.01mm/m

USE • Leveling of machine tools and surface plates. Straightness and flatness measurements.

MATERIALS • Body : Aluminum
 • Base : Cast iron

FEATURES

- Quicker response than bubble level
- Sensitivity is switchable in 3 steps
- Connectible directly to commonly-available analog recorder through analog output
- Custom-made base can be attached to the threaded screw holes (M5 × P0.8) in the bottom of level base(flat base)
- Automatically switches from DC to AC when the adapter is connected
- Pendulum system prevents any hysteresis errors and is not influenced by temperature change.



■ SPECIFICATIONS

Sensitivity	I : 1 Division = 0.01mm/m II : 1 Division = 0.05mm/m III : 1 Division = 0.1mm/m
Measuring Range	± 0.2mm/m (1 Division 0.01mm/m) ± 1mm/m (1 Division 0.05mm/m) ± 2mm/m (1 Division 0.1mm/m)
Operating Temperature	0 ~ 40℃
Pointing Error	within ± 0.5 Division
Repeatability Accuracy	within ± 0.005mm/m
Output Signal	Analog output ± 200mV F.S. (for all range) Connectible load resistance: No less than 100 Ω
Power Source	"9V" type dry cell, 1 pc AC Adapter (included)
Run time (continuous use)	Zinc-carbon Cell : Approx. 25 hrs Alkaline cell : Approx. 50hrs ※ May vary depending upon measurement condition
Base Dimension	L150 × W85 × H195mm ※ Excluding Handle (Dimension : L150 × W55mm)

Oeder No.	Model No.	Weight
010005	EL-01A	2.9kg

Connection Cable / EL-K2

USE • Connects to analog recorder with analog output of EL-01A

FEATURES

- Length : φ 3 × 5m
- Recorder: Banana plug
- Levelnic : M3 plug

Oeder No.	Model No.	Weight
010082	EL-K2	150g

ANGLE

LEVELNIC

PRECISION
LEVEL

ANGLE
LEVEL

LEVEL

PROTRA
CTOR



SOFTWARE FOR LEVELNIC

Software for Levelnic.
Simple operation and graphics for easy use and understanding

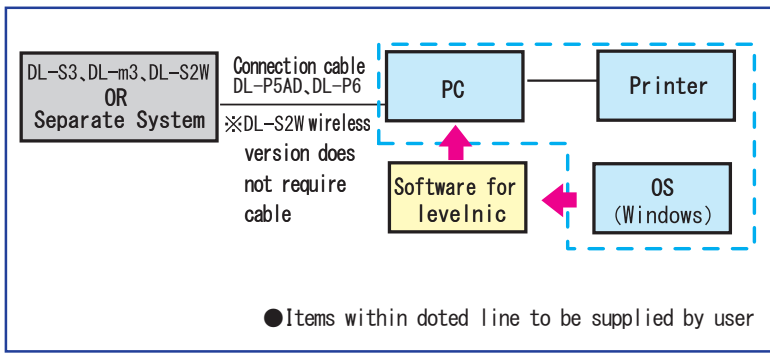
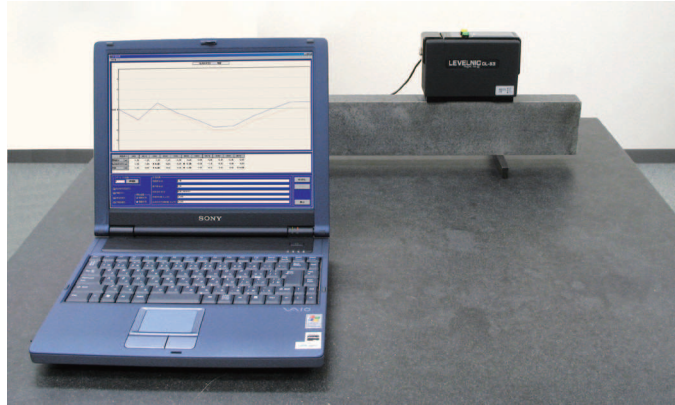
Straightness measurement computer software(ST)
 Flatness measurement computer software (FL)

- Greatly reduces measurement time by recording the results for straightness and flatness measurements
- For cabled and wireless system
- Supported OS : Windows 95 • 98 • ME • 2000 • XP • Vista • 7
- Direct input from DL-S2+D3、DL-S3、DL-S3C、DL-S3L、DL-m3、DL-m3LS、DL-S2W、and Separate System

■ Flatness measurement



■ Straightness measurement while connected to PC



No need to install the software to PC

Only drag and drop .exe file, and double click to start. Also can be used directly from USB memory.

Input selection

Data can be manually typed in from any level, including bubble tube type level.

Input signal from Levelnic over RS-232C

With computer connected to the Levelnic output, sequential measurements taken at regular intervals can be used to calculate flatness and straightness for display, printing and storage. (saved measurement data can not be revised)

Input typed onto keyboard from bubble level for display, calculation and storage

Using a bubble level, and keyboard to enter data, sequential measurement taken at regular intervals can be used for calculation, display and storage.

Displacement measurements (μm) typed onto keyboard for display, calculation and storage

Measurement of displacement from a reference plane made with a linear gauge or dial indicator at regular intervals can be used in place of an electronic angle gauge (goniometer) and entered into keyboard for calculation, display and storage.



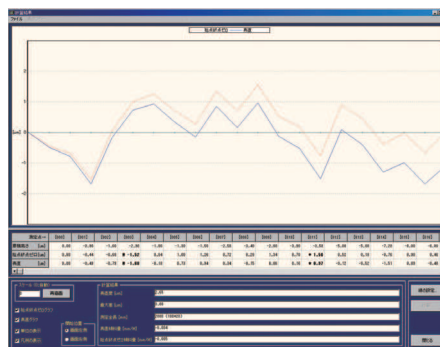
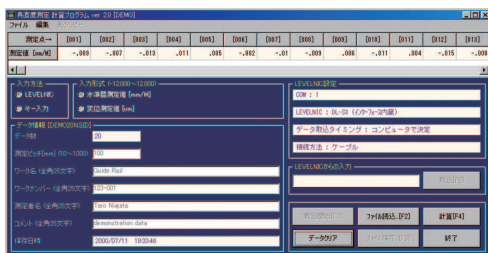
LEVELNIC MEASUREMENT SOFTWARE

Use to easily calculate flatness and straightness when connected to Levelnic with cable or wireless connection

Straightness software ver. 2.0

● With straightness software Levelnic can easily perform the straightness measurements that once required an autocollimator, and for a lower cost!

■ Straightness measurement



■ **USE** • Software to perform straightness calculations

■ FEATURES

- Both wired and wireless capability
- Model compatibility: DL-S2 + D3 • DL-S3 • DL-S3C • DL-S3L • DL-m3 • DL-m3LS • DL-S2W
- ※ Above compatibility applies for direct connection. Data can be manually typed in from any model, including bubble tube type level.

■ SPECIFICATIONS

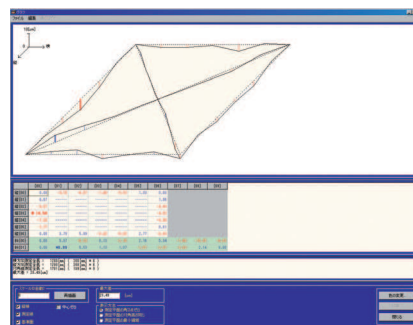
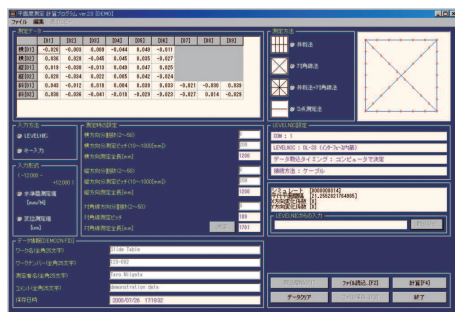
- Supports : Windows 95 • 98 • ME • 2000 • XP • Vista • 7

Order No.	Model No.
010066	ST

Flatness software Ver. 2.0

● With Flatness software Levelnic can easily perform the flatness measurements that once required an autocollimator, and for a lower cost!

■ Flatness measurement



■ **USE** • Software to perform flatness calculations

■ FEATURES

- Both wired and wireless capability
- Model compatibility: DL-S2 + D3 • DL-S3 • DL-S3C • DL-S3L • DL-m3 • DL-m3LS • DL-S2W
- ※ Above compatibility applies for direct connection. Data can be manually typed in from any model, including bubble tube type level.

■ SPECIFICATIONS

- Supports : Windows 95 • 98 • ME • 2000 • XP • Vista • 7

Order No.	Model No.
010065	FL

Data Record Software Ver. 2.0

■ **USE** • Records output data from Levelnic

■ **FEATURES** • Levelnic measurements are recorded to text file

- Model compatibility: DL-S2 + D3 • DL-S3 • DL-S3C • DL-S3L • DL-m3 • DL-m3LS • DL-S2W

■ SPECIFICATIONS

- Supports : Windows 95 • 98 • ME • 2000 • XP • Vista • 7

Order No.	Model No.
010067	LEVELOG



ANGLE

07

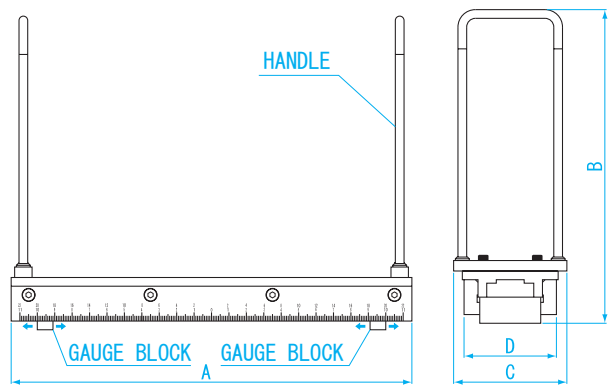
LEVELNIC BASE WITH ADJUSTABLE PITCH

By attaching Levelnic to this base, any desired measurement pitch can be set



LP-300

DIMENSIONS



USE • Setting a fixed pitch for straightness and flatness measurements

FEATURES

- Made of Carbon tool steel
- Applicable levelnic: DL-S2 • DL-S3 • DL-S3C • DL-S2W • EL-01A
- The base is graduated in mm and enables setting measurement pitch
- Measuring face consists of 2 pcs of 15mm Gauge block

Units : mm

Model No.	A	B	C	D
LP-200	230	180	65	55
LP-300	330	180	65	55

Order No.	Model No.	Measurement pitch range (mm)	Weight
010020	LP-200	50 ~ 200	1.8kg
010021	LP-300	50 ~ 300	2kg

CASE FOR LEVELNIC



Shock resistant aluminum case for Levelnic. Suitable for storage and carrying



LV-CS3



LV-CM1

FEATURES

- Carrying case for Levelnic (Levelnic is a precision instrument, we recommend that you use a carrying case)
- Body : Aluminum
- Inside : Urethane foam
- Applicable levelnic :
LV-CS3 : DL-S1 • DL-S2 • DL-S2W • DL-S3 • DL-S3C
LV-CM1 : DL-m1 • DL-m3
- Shock protection during transport

Order No.	Model No.	Dimensions (mm)	Weight
010025	LV-CS3	362 × 236 × 184	1.86kg
010026	LV-CM1	250 × 200 × 150	1.15kg

ANGLE

LEVELNIC

PRECISION
LEVEL

ANGLE
LEVEL

LEVEL

PROTRA
CTOR