

SYNCHRO

Micro-Floating[®]Tapper Series

BT40-SSR412-OHC

BT30-ESS412-OHC

BT30-ESS103

BT40-HA412-M-OHC

ESS/ESS-OHC, SSR-OHC **NOW ON SALE**

ESS

For Ultra-Micro
(M1 ~)

ESS-OHC

For High-Speed,
High-Pressure

SSR-OHC

Longer-size Collets
Applicable

HA-M-OHC

Handy &
Effective

<http://kato-koki.com/>

**For High-speed,
High-pressure !**

Model ESS fits best for M1 - M3 Synchronized Tapping.

Recommended in the field of mobile phone parts, PC parts, smaller-sized auto parts, semiconductor parts, and medical device parts, etc.

◆ For the best quality of Synchronized Tapping

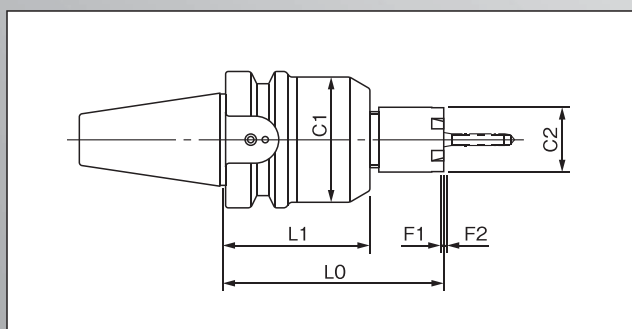
- ▶ Compatible with high-speed synchro taps & cemented carbide taps

◆ Center-through-Coolant

- ▶ Up to 7 MPa (ESS-OHC)

◆ Product Line-ups

- ▶ M1 - M3 (BT30 / BT40) --- ESS 103
- ▶ M4 - M12 (BT30 / BT40 / BT50) --- ESS412-OHC
- ▶ M10 - M22 (BT50) --- ESS1022-OHC



| Model | L0 | L1 | C1 | C2 | F1 | F2 | Tapping Capacity | Matching Collet | Sealing Disc | Weight [kg] |
|------------------|-------|-------|------|------|-----|-----|------------------|-----------------|--------------|-------------|
| BT30-ESS 103 | 65.0 | 47.0 | 30.5 | 12.0 | 0.5 | 0.5 | M 1~M 3 | ER8-UP | — | 0.55 |
| BT40-ESS 103 | 75.0 | 57.0 | 30.5 | 12.0 | 0.5 | 0.5 | M 1~M 3 | ER8-UP | — | 1.18 |
| BT30-ESS 412-OHC | 90.0 | 63.8 | 42.0 | 22.0 | 0.5 | 0.5 | M 4~M12 | ER16-GB | DS/ER 16 | 0.70 |
| BT40-ESS 412-OHC | 105.0 | 78.8 | 42.0 | 22.0 | 0.5 | 0.5 | M 4~M12 | ER16-GB | DS/ER 16 | 1.45 |
| BT50-ESS 412-OHC | 135.0 | 108.8 | 42.0 | 22.0 | 0.5 | 0.5 | M 4~M12 | ER16-GB | DS/ER 16 | 4.24 |

SYNCHRO

Micro-Floating®
Tapper

SSR-OHC

CA
Series

**Handiness &
High Performance !**

For Synchronized Tapping. Quick Change of Taps.
Longer-size Tap Collets applicable.
Ideal for bigger-size and / or complex-shape works.

◆ Handiness & High Performance

- ▶ Conventional TCA / TCA-L, TCA-SB, TCA-HP-SB Tap Collets are applicable
- ▶ In changing Taps, re-adjustment of tool length is unneeded

◆ Six sizes of Tap Collets in length

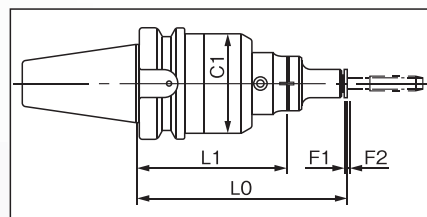
- ▶ Cost Optimization by changing from longer-size Taps to normal-size Taps in wider variety

◆ Center-through-Coolant

- ▶ Up to 2 MPa (SSR-OHC + TCA-SB)
- ▶ Up to 5 MPa (SSR-OHC + TCA-HP-SB)

◆ Product Line-ups

- ▶ M4 - M12 (BT40 / BT50) --- ESS412-OHC
- ▶ M10 - M22 (BT50) --- ESS1022-OHC



BT40-SSR412- OHC
+
TCA412-S

| Model | L0 | L1 | C1 | F1 | F2 | Tapping Capacity | Matching Collet | Weight [kg] |
|-------------------|-------|-------|------|-----|-----|------------------|------------------------------------|-------------|
| BT40-SSR 412-OHC | 150.0 | 117.0 | 56.0 | 0.5 | 0.5 | M 4~M12 | TCA412, TCA412-SB, TCA412-HP-SB | 1.90 |
| BT50-SSR 412-OHC | 150.0 | 117.0 | 56.0 | 0.5 | 0.5 | M 4~M12 | TCA412, TCA412-SB, TCA412-HP-SB | 4.30 |
| BT50-SSR 1022-OHC | 195.0 | 140.0 | 74.0 | 0.5 | 0.5 | M10~M22 | TCA1022, TCA1022-SB, TCA1022 HP-SB | 4.80 |

SYNCHRO

Micro-Floating®
Tapper

HA-M-OHC

SA
Series

Regular assortment of Synchronized Tapping. Quick change of Taps / Tap Collets.
Center-through-Coolant / Mist is applicable. Recommended for
industrial machinery parts, heavy machinery parts, construction car parts, auto parts, etc.

◆ Amazing Handiness / User-friendliness

◆ Center-through-Coolant / Mist applicable

◆ Product Line-ups : M3 - M56

* You can find the detailed info on our website.
<http://kato-koki.com/eng/>



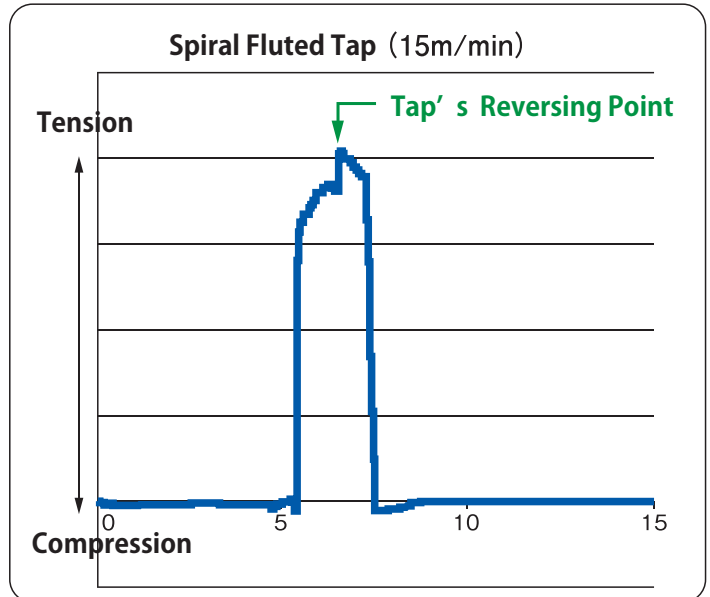
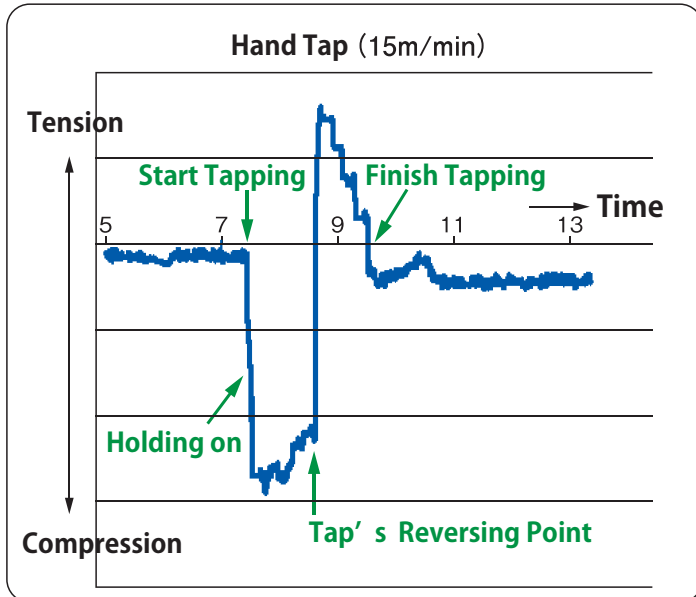
BT40-HA412-M-OHC
+
TC412-MO

What's Micro-Floating Tapper ?

Cutting-edge Tapping Holder Series for Synchronized Machining Center

◆ Micro-Floating function

In using Micro-Floating Tappers, you can immediately compensate the synchronization error, preventing from many tapping trouble caused by excessive thrusting power as well as extending the taps' life.



Test Result

by DBT-ESS103



M2 Roll Tap, ADC work, 25 m/min.

by a Collet Chuck



by DBT-ESS103

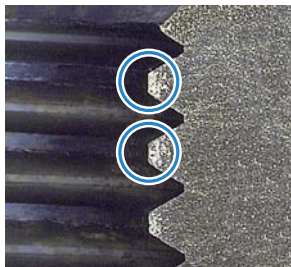


M3 Spiral Fluted Tap, ADC work, 56m/min.

by a Collet Chuck

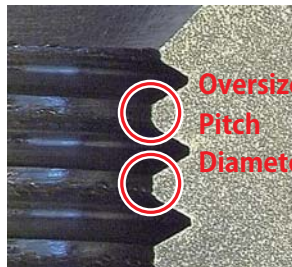


by BT-HA-M-OHC



M12 Spiral Fluted Tap, SS400 work, 15m/min.

by a Tapper



Oversized
Pitch
Diameter

Separate from these Micro-Floating Tappers, we could also provide a wide range of Tap Holders that can help you to realize the "Best Synchronized Tapping" ----- model SKB, RF, RA, etc.

KATO MFG.CO.,LTD.

2-65, Shinmachi, Hiratsuka, Kanagawa, JAPAN

TEL: +81-463-36-1511

<http://kato-koki.com/>